



JF

Jonathan Fitzpatrick
VILLAGE & COUNTRY HOMES

3 Ash Grove Farnsfield NG22 8FY

£425,000 Freehold



Overview

2019 built detached house
4 bedrooms
2 reception rooms
New kitchen breakfast room
Downstairs w/c
En suite to master bedroom
Family bathroom
Single detached garage
Driveway for 2 cars
Cul de sac location

JF Notes

'An attractive 4 bedroom detached family house in one of the best positions within this development, with views across fields at the front. Vibrant modern decoration gives this nearly new home real character and charm. Minster school catchment, and close to St Michaels primary school. Competitively priced too.'



Features

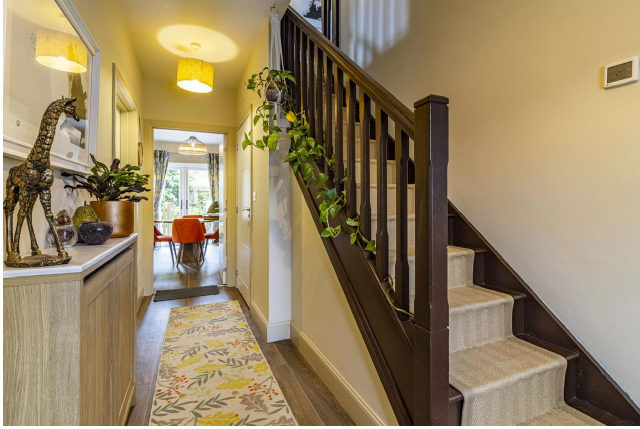
Re-fitted kitchen
West facing rear garden
Corner plot
Vendor ready to proceed
Short walk to shops, pubs, primary school, and park
NHBC guarantee
Gas central heating
Views towards fields at the front

Viewing

By appointment only. Please call our office on **01623 392676** or email mail@jfea.co.uk

Lines open 7 days a week
9.00am - 6.00pm

Jonathan Fitzpatrick Village & Country Homes 64 Main Street Farnsfield NG22 8EF

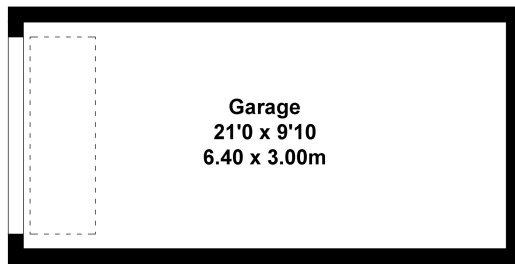




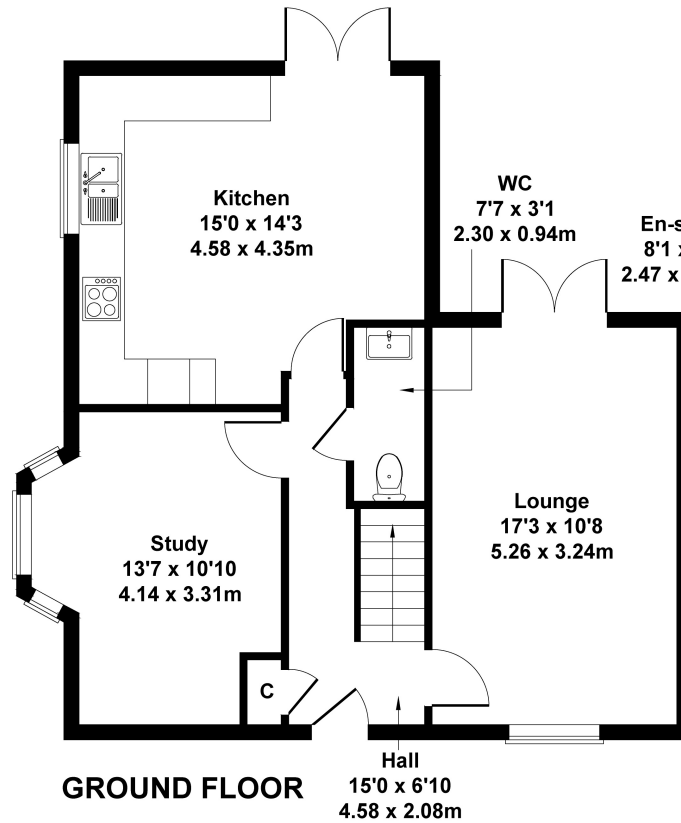


3 Ash Grove, Farnsfield, Newark, NG22 8FY

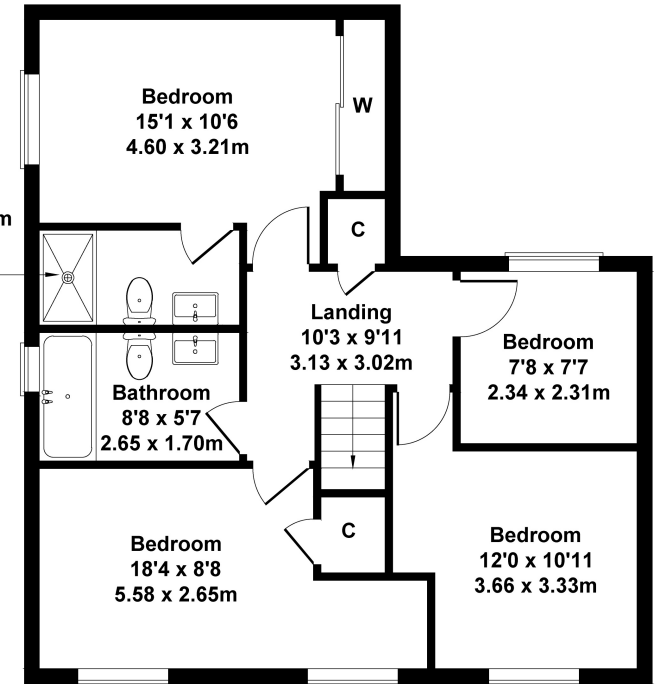
Approximate Gross Internal Area
1442 sq ft - 134 sq m



GARAGE



GROUND FLOOR



FIRST FLOOR

Council Tax Band E

Not to Scale. Produced by The Plan Portal 2023
For Illustrative Purposes Only.

3, Ash Grove Farnsfield NEWARK NG22 8FY	Energy rating	Valid until:	10 March 2029
	B	Certificate number:	8509-8296-3339-2197-2713

Agents Note: Whilst every care has been taken to prepare these sales particulars, they are for guidance purposes only. All measurements are approximate are for general guidance purposes only and whilst every care has been taken to ensure their accuracy, they should not be relied upon and potential buyers are advised to recheck the measurements